



The relentless energy

Maximum energy storage and return for the most demanding patients.

Suggested for high impact activities requiring torsional movement and for occasional sport activities.

Natural, comfortable, extremely responsive

Key features



NRGTM
Technology



Multilayer



Dynamic
Calf & Shin



Split-toe



Range of
motion
26°



Axial
rotation
16°



Firm/Solid
Connection

Key benefits

- Physiological and energy efficient gait
- Smooth rollover during the whole gait cycle
- High dynamic response to support an active lifestyle
- Possibility to do a wide range of activities with just one single foot
- Ground compliance and stability on all terrains
- Reduction of secondary issues thanks to a more balanced posture and symmetrical gait
- Low maintenance
- Lightweight

Technical information

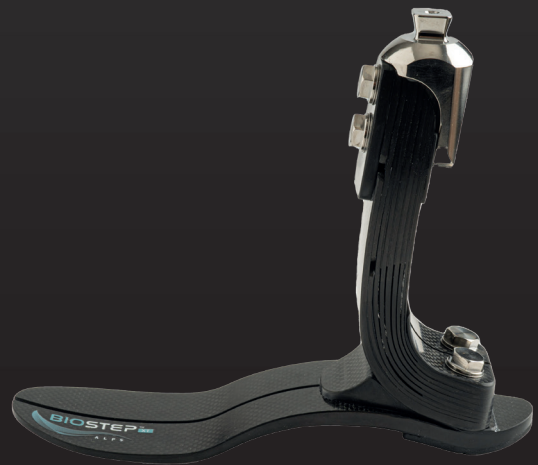
Activity Level:  K2  K3  K4

Size Range: **22-30**

Build Height: **185 mm**

Heel height: **10 mm**

Weight: **840 g** (size 26 with footshell)



Max user weight

Size	K2 	K3	K4
22-30	152kg	140kg	120kg


Alignment:

Socket midline should run 25-50 mm anterior to the midline of the male pyramid.

Product code example

Model	Size	Side	Rate
BSXT	25	L/R	42

Add -D for dark footshel

 Indicated for more active K2 users



Footshell and spectra sock are included

Use our product selector to find the Product code which better fits your individual needs.

